



## 6805 Perimeter Drive

6805 Perimeter Drive, Dublin, Ohio 43016

### Property Features

- 112,877 SF, three-story office building, expandable by 48,232 SF
- 6:1,000 SF parking ratio expandable to 8:1,000 SF Ratio
- Executive floor with high end finishes
- Cafeteria with large well equipped kitchen & patio access
- Key-card access throughout
- On-site backup generator
- 3 Passenger Elevators / 3 Stairwells
- Well located in desirable Dublin sub-market
- Near OhioHealth Dublin Methodist Hospital
- Easy access to SR-161 and I-270
- Numerous amenities nearby

**Lease Rate: \$12.95 SF/Yr (NNN)**



For more information:

**Andy Dutcher**

614 629 5266 • [adutcher@ohioequities.com](mailto:adutcher@ohioequities.com)

**Matt Gregory**

614 629 5234 • [mgregory@ohioequities.com](mailto:mgregory@ohioequities.com)

**Philip Bird**

614 629 5296 • [pbird@ohioequities.com](mailto:pbird@ohioequities.com)

NO WARRANTY OR REPRESENTATION, EXPRESS OR IMPLIED, IS MADE AS TO THE ACCURACY OF THE INFORMATION CONTAINED HEREIN, AND THE SAME IS SUBMITTED SUBJECT TO ERRORS, OMISSIONS, CHANGE OF PRICE, RENTAL OR OTHER CONDITIONS, PRIOR SALE, LEASE OR FINANCING, OR WITHDRAWAL WITHOUT NOTICE, AND OF ANY SPECIAL LISTING CONDITIONS IMPOSED BY OUR PRINCIPALS NO WARRANTIES OR REPRESENTATIONS ARE MADE AS TO THE CONDITION OF THE PROPERTY OR ANY HAZARDS CONTAINED THEREIN ARE ANY TO BE IMPLIED.

NAI Ohio Equities

605 S Front Street, Columbus, OH 43215

614 224 2400

[ohioequities.com](http://ohioequities.com)

6805 Perimeter Drive

# Available Space

**Lease Rate:** \$12.95 SF/YR      **Total Space** 37,625 - 112,877SF  
**Lease Type:** NNN

Space	Lease Rate	Lease Type	Size (Sf)
First Floor	\$12.95 SF/Yr	NNN	37,625
Second Floor	\$12.95 SF/Yr	NNN	37,626
Third Floor	\$12.95 SF/Yr	NNN	37,626



## First Floor

Two-Story Lobby

Reception/Waiting Area

Cafeteria with Large Well Equipped Kitchen & Patio Access

- > 5 Refrigerators
- > Ice Machine
- > Multiple Warming Racks
- > Electric Stove Top & Pizza/Sandwich Oven
- > 3 Exhaust Hoods
- > 128 Potential Seats

14 Private Offices

2 Conference Rooms

5 Storage Rooms

3 Kitchenettes

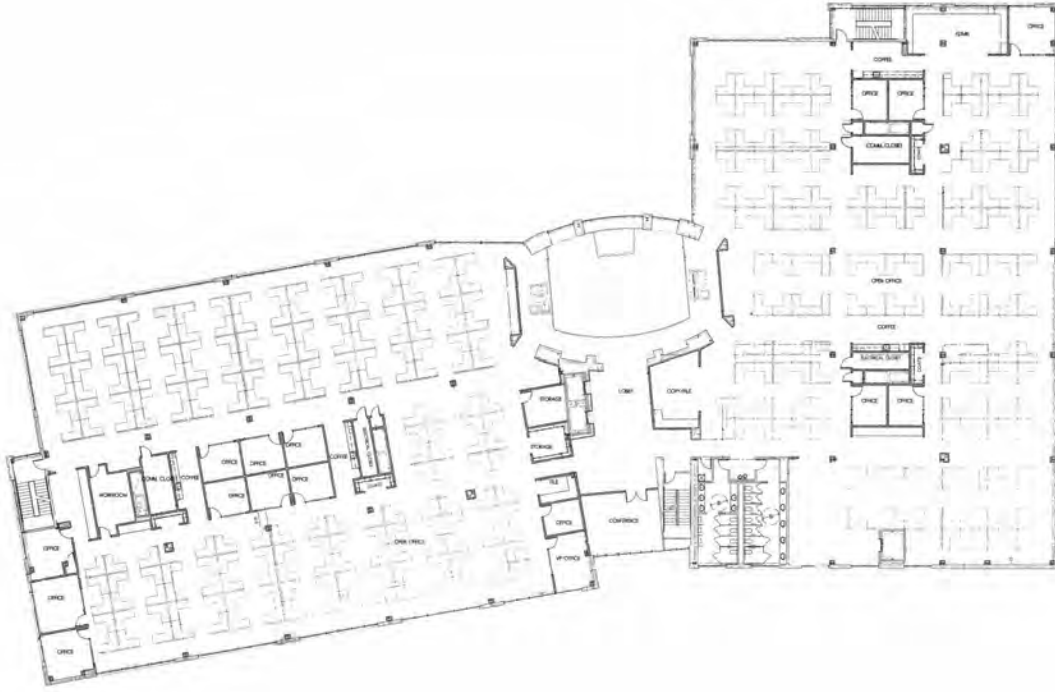
2 Copy Areas

IT Equipment Rooms

Common Area ADA Restrooms

Open Area for Approximately 230 Workstations

# Second Floor Floorplan



## Second Floor

- 16 Private Offices
- Conference Room
- Workroom
- 4 Kitchenettes
- 2 Copy/File Areas
- 2 Storage Rooms
- Common Area ADA Restrooms
- Open Area for Approximately 357 Workstations



## Third Floor - Executive Floor

- Private Lobby
- 4 Executive Offices
- Executive Board Room
- Executive Conference Room
- Executive Media Room
- 2 Executive Workrooms (Connect Two Executive Offices in the Middle)
- 1 Executive Kitchen
- 2 Executive ADA Restrooms
- Assistants Area
- 30 Private Offices
- Conference Room
- 2 Kitchenettes
- 5 Workrooms
- Common Area ADA Restrooms
- 5 Supply/Storage Rooms
- Large Training Room
- Computer Lab
- Open Area for Potentially 109+ Workstations

6805 Perimeter Drive

# Property Photographs



6805 Perimeter Drive

# Property Photographs



6805 Perimeter Drive

# Property Photographs



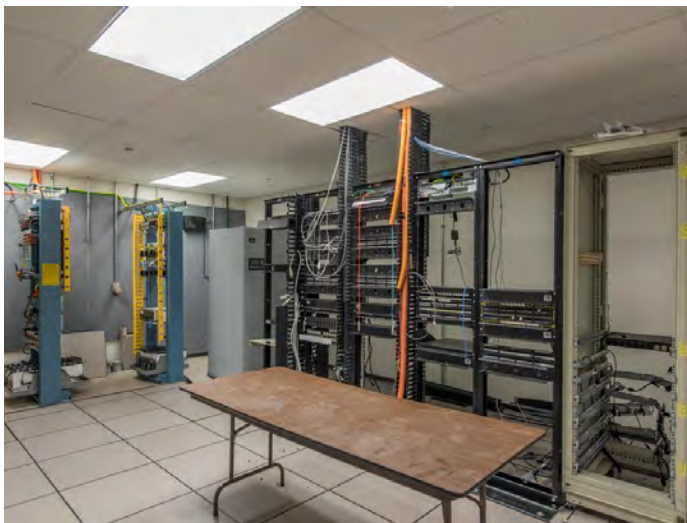


6805 Perimeter Drive

# Property Photographs



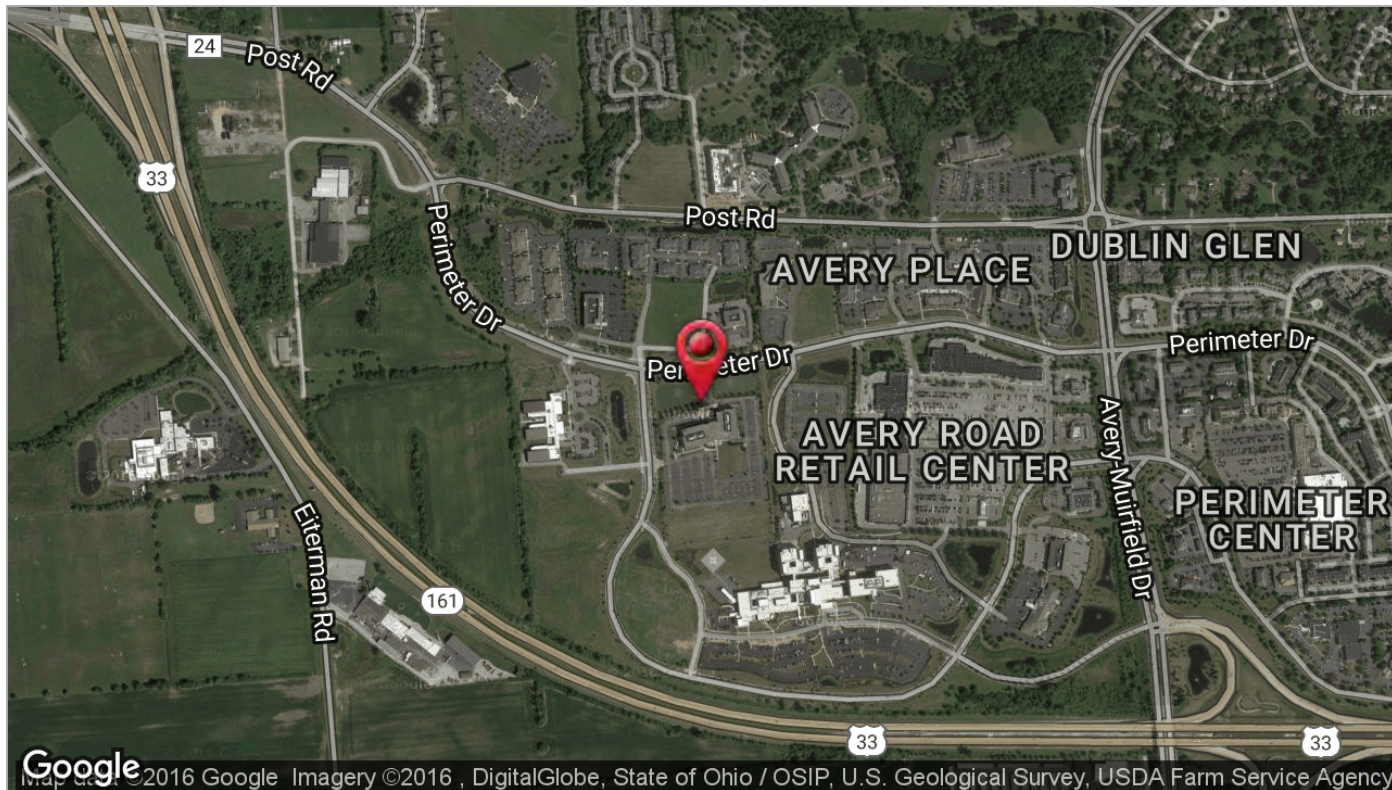
# Property Photographs



# Labeled Aerial



# Location Maps



6805 Perimeter Drive

# Nearby Amenities

