



Blazer Research District

A mix of office, laboratory, and research facilities.

This business neighborhood offers easy access to restaurants, hotels, and retail, and includes multiple locations with freeway visibility. The offices in this neighborhood include corporate headquarters, high-tech research labs, class-A office space, and multi-tenant options, as well as a number of settings ready for custom builds.



"Ashland has maintained a strong presence in Dublin for many years, and we appreciate the continued support of the city and the local community."

- **Andy Johnston**
Composites Group Vice President
Ashland, Inc.



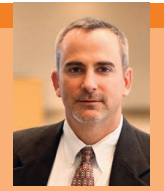
"DubLink has been the key component in our ability to deliver leading-edge technologies to our care-givers."

- **Jim Lowder**
Vice President, Technology
OhioHealth

Bridge Street District

The Midwest's only true mixed-use, walkable neighborhoods within a suburban community.

The urban energy combines with suburban convenience to make an ideal home for entrepreneurs, creative offices, retailers, restaurants, entertainment venues, and a variety of residential options.



"We are building amazing healthcare technology products at the Fuse and excited to be in Dublin as more innovative companies become a part of the vibrancy of Bridge Park and the entire Bridge Street District."

- **Steve Stidhem**
Director, Product Management
Commercial Technologies
Fuse by Cardinal Health

West Innovation District

The showcase business community for forward-thinking companies that desire high-tech office space, clean manufacturing facilities, and related supporting purposes.

Freeway visibility and access, open spaces, and a unique mix of contemporary architecture and natural landscapes make this business neighborhood the ideal setting for modern enterprise campuses.



"We value our strong partnership with the City of Dublin -- especially their guidance as we planned the expansion of our state-of-the-art quality assurance lab."

- **Aaron Ayers**
Director, Quality Management
Nestlé USA

Shier Rings TechFlex District

Dublin's best combination of office and high-tech manufacturing.

This business neighborhood caters to any organization that desires to have their headquarters or offices immediately adjacent to modern industrial applications such as prototyping, specialized assembly, or clean manufacturing.



"The City of Dublin has been an important part of our success. Their continued support and personal commitment to our company has helped us grow in many ways."

- **Yoshihiro Hidaka**
President, Hidaka USA, Inc.

Metro Office District

The most established office park in Dublin.

This business neighborhood offers great freeway visibility and access; provides affordable office options; contains a variety of restaurants and hotels; and is just blocks from even more restaurants, hotels, retail, and all the conveniences of an ideal suburban setting.



"As a technology company, we appreciate that Dublin 'gets it'. The City has invested heavily in broadband fiber optic technology and is one of America's most wired cities. The City is progressive and genuinely committed to making Dublin a great place to do business."

- **Michelle Kerr**
President, Lightwell

Emerald Corporate District

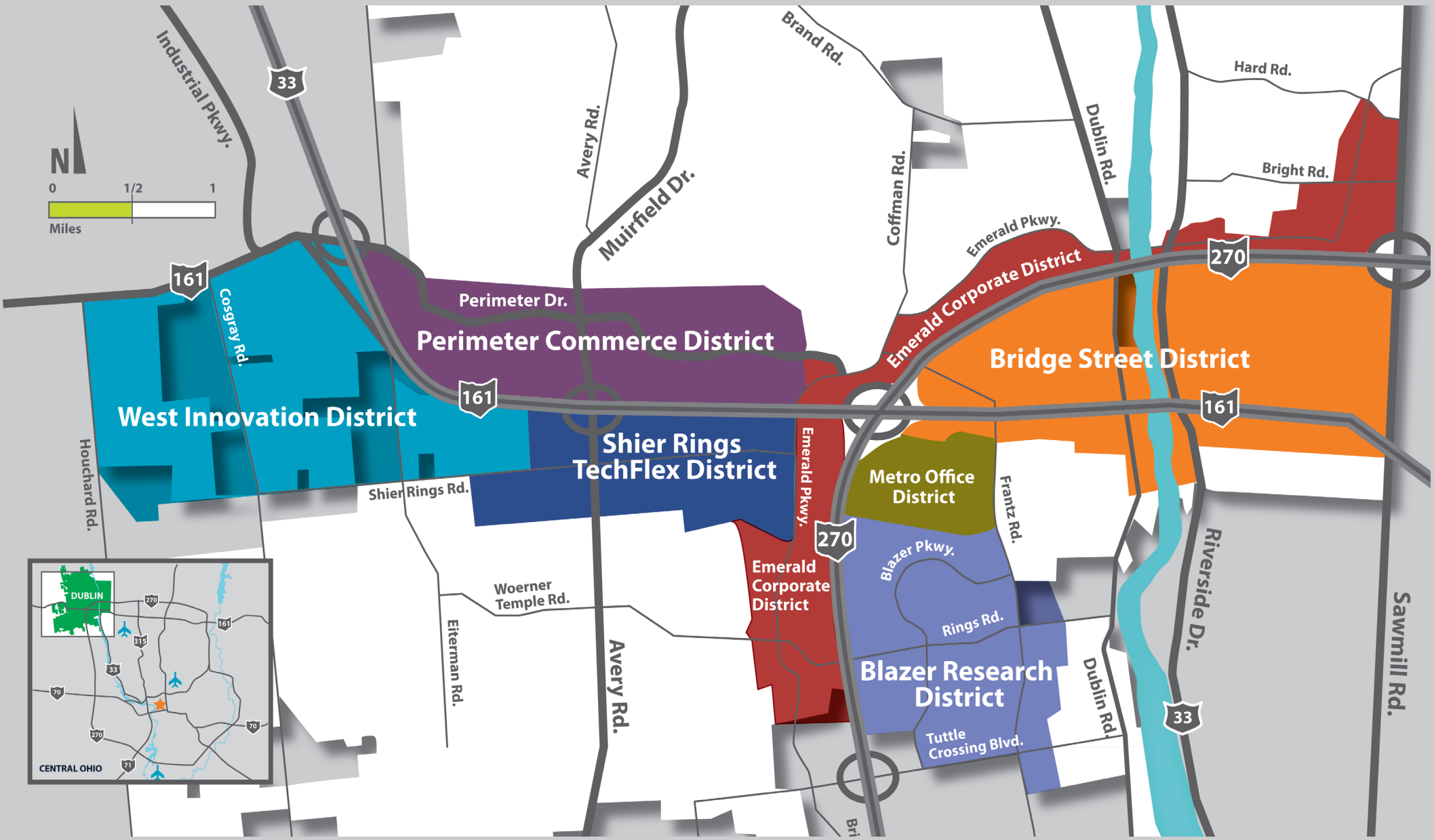
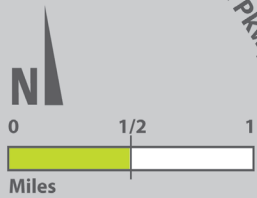
The premier address for Class-A office and corporate headquarters.

Highly visible from one of Ohio's most-traveled freeways, and already occupied by some of the biggest brands in the United States, this neighborhood offers ideal locations for any organization that desires a high profile setting with easy access to all the amenities that Dublin and the Columbus region have to offer.



"The City of Dublin is both innovative and forward-thinking, which made it an ideal place for building our new LEED-platinum certified headquarters."

- **Scott White**
President, IGS Energy



Realize The Dream

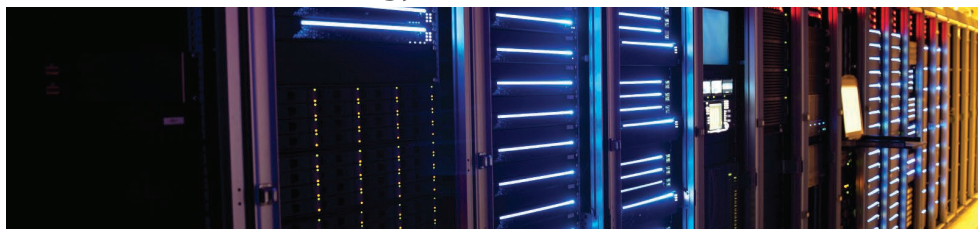
From our long list of successful local, regional, national, and international businesses, to our robust physical and technology infrastructure—the Dublin Business Community provides an environment where smart and innovative organizations can realize their own specific measures of success.

The Facts

- Over 3,000 businesses
- Over 43,000 people
- Approximately 80% of the adult population has earned a bachelor's or graduate degree
- 5 highway interchanges
- Over 2,000 acres of undeveloped or infill opportunities
- Over 7 million square feet of Class A and Class B space
- Over 1 million square feet of medical office space
- Over 1.7 million square feet of retail space
- Over 1.5 million square feet of industrial space



Business and Technology Infrastructure



- Dublink: 125-mile city-owned underground looped fiber-optic system providing up to 100 GB of network speed
- Dublin Entrepreneurial Center
- Access to:
 - Ohio Supercomputer Center (OSC)
 - Ohio Academic Research Network (OARnet)
 - Central Ohio Research Network (CORN)
 - A community of data center service providers

Community Features

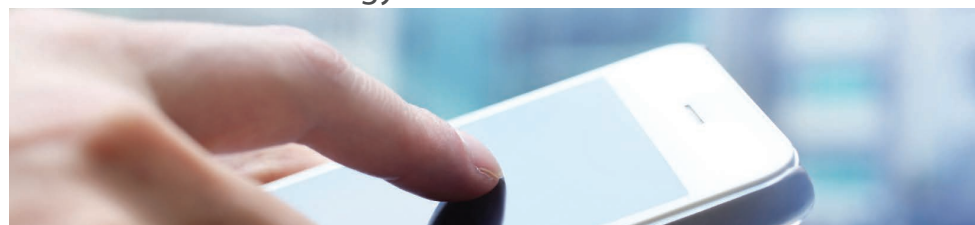


- 3 public high schools
 - All ranked in the top 500 in the nation by *Newsweek*
 - All rated "excellent with distinction" by the State of Ohio
- 11 area golf courses including the Muirfield Village Golf Club, home of the Memorial Tournament presented by Nationwide Insurance
 - Home of The Presidents Cup 2013
 - The only community in the world to host the Solheim Cup, Ryder Cup, and Presidents Cup
- Recognized as an IFEA World Festival & Event City
- Over 2,000 acres of parkland and nearly 100 miles of bike paths

Industries

The Battelle Technology Partnership analyzed and identified four primary business clusters that have both the strongest current presence and the best growth potential for Dublin.

Information Technology



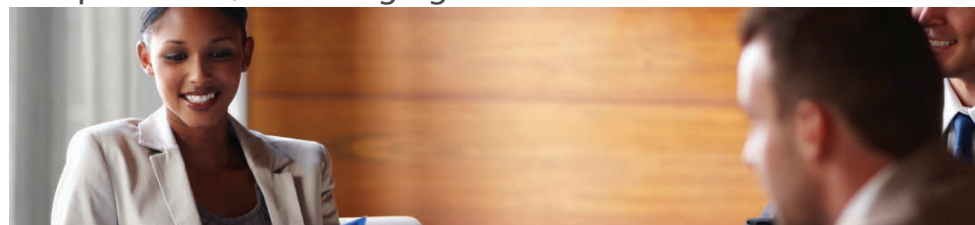
- | | | |
|------------------|---------------------|-------------------------|
| ■ Alcatel-Lucent | ■ Fiserv | ■ OCLC (HQ) |
| ■ CenturyLink | ■ HP | ■ Netsmart Technologies |
| ■ Command Alkon | ■ Metro Data Center | ■ Socius |
| ■ Dell | | |

Medical Biosciences & Healthcare



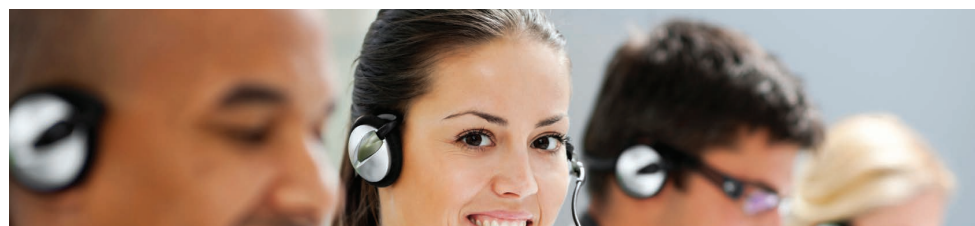
- | | |
|--|--|
| ■ Dublin Methodist Hospital (OhioHealth) | ■ Navidea Biopharmaceuticals |
| ■ Express Scripts | ■ Ohio University Heritage College of Osteopathic Medicine |
| ■ Fuse by Cardinal Health | ■ Sarnova |
| ■ Humana | ■ Smiths Medical |
| ■ LabCorp | |

Corporate HQs & Managing Offices



- | | |
|---|-----------------------------------|
| ■ Ashland Inc. | ■ Nestlé Quality Assurance Center |
| ■ Battelle | ■ Nexeo Solutions |
| ■ Cardinal Health Inc. (Ohio's largest company) | ■ Stanley Steemer International |
| ■ CareWorks Family of Companies | ■ The Wendy's Company |
| ■ Delta Energy | ■ XPO Logistics |
| ■ IGS | ■ York Services Group |

Business Services



- | | |
|------------------------------|---------------------------|
| ■ Henry Schein Animal Health | ■ PCCW Teleservices |
| ■ Community Choice Financial | ■ Sedgwick |
| ■ Garden City Group | ■ Standley Law Group |
| ■ JPMorgan Chase | ■ Transworld Systems Inc. |
| ■ Northwoods | ■ Wilke Global |




EconDev.DublinOhioUSA.gov
614.410.4618
business@dublin.oh.us

5800 Shier Rings Road
Dublin, Ohio 43016

Sign up for Economic Development
eNews at www.DublinOhioUSA.gov

 /DublinOhio

 /DublinOhio

 /company/city-of-dublin-ohio-usa