

# Economic Development, Envision Dublin and Metro Center Updates





**Megan O'Callaghan**  
City Manager

Sustainable | Connected | Resilient







**Dublin City Council**

---

# Strategic Framework

Dublin, Ohio is the Most **Sustainable**, **Connected** and **Resilient** Global City of Choice



## Sustainable

- Economic
- Fiscal
- Environmental
- Services



## Connected

- Democracy
- Mobility
- Infrastructure
- Land Use



## Resilient

- Physical
- Mental
- Safety
- Social

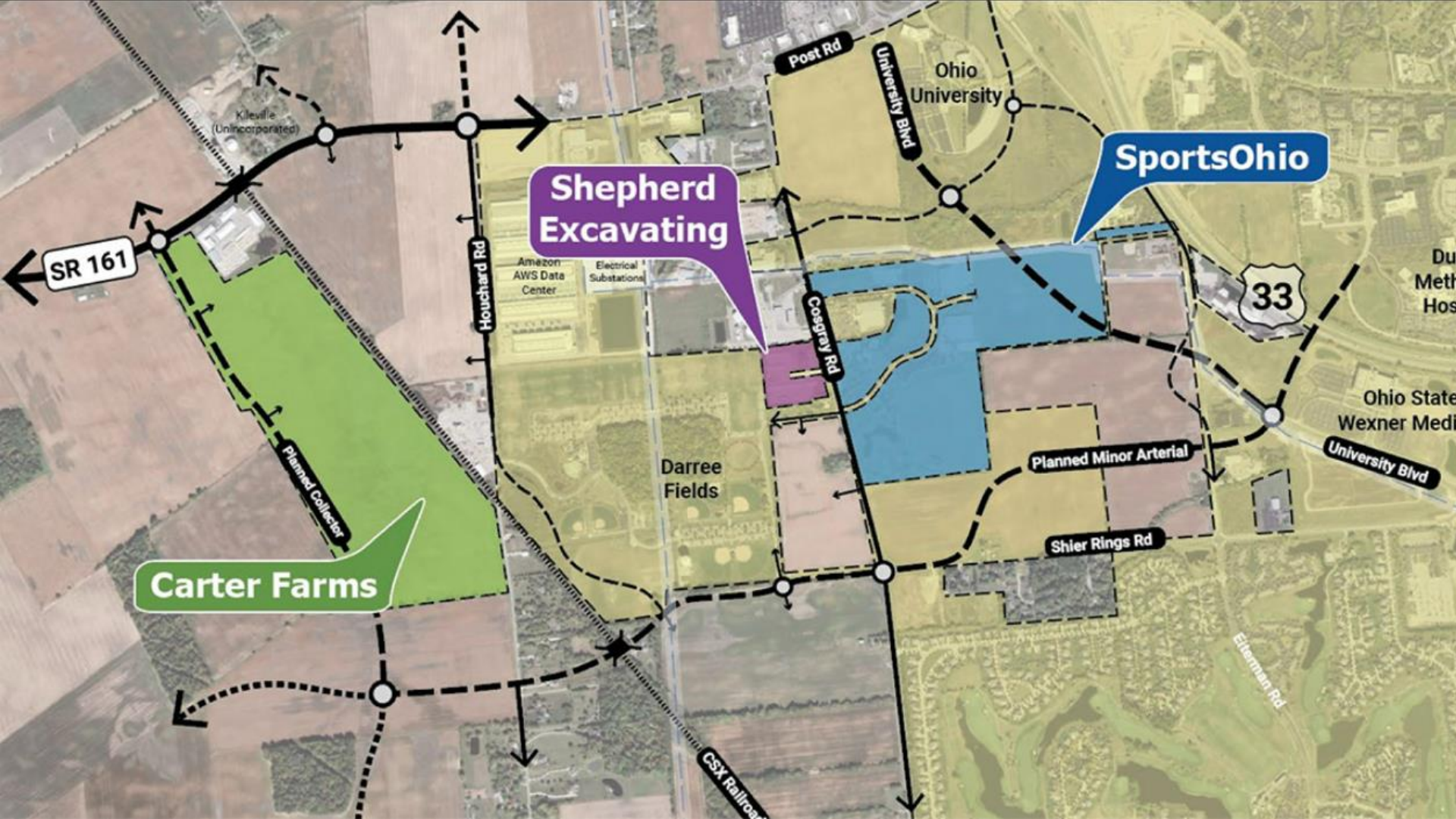


# Most Sustainable



## Economics

The city where diverse businesses want to be located in order to grow, thrive, develop and participate in the global economy.



Shepherd  
Excavating

SportsOhio

Carter Farms

Darree  
Fields

Planned Minor Arterial

Planned Collector

SR 161

33

Post Rd

University Blvd

Ohio University

Houchard Rd

Amazon AWS Data Center

Electrical Substation

Cosgray Rd

University Blvd

Shier Rings Rd

Ebermann Rd

CSX Railroad



# City Council Goals



## Realize the Metro Center Revitalization Vision

Reposition the Metro Center legacy office park by implementing the vision, goals and land use recommendations outlined in the Dublin Corporate Area Plan within the Envision Dublin Community Plan. Develop a design and implementation framework that creates a distinctive identity, encourages dynamic reinvestment provides a vibrant mix of uses in a walkable environment and promotes sustainable design principles. Identify opportunities for public and private partnerships for catalytic projects that transform the Metro Center area.



## Become the most connected community in the U.S.

Fiber to Every Home Project. Plan for the initial construction and customer installation, achieving 25% deployment in 2024.



## Develop Dublin's "Destination of Choice" Next-Generation Community Events Vision

Develop and implement a local and regional community events program and management roadmap. Leverage Dublin parks and facilities to create a connected, comprehensive and fiscally sustainable vision that drives vitality, engagement and entertainment.



## Implement the Parks and Recreation Master Plan

Begin implementation of the Parks and Recreation Master Plan with a focus on cultivating an environment that embodies both recreation and economic vibrancy.

# Planning For Development



## ENVISION DUBLIN Community Plan

Sustainable, Connected & Resilient



Sustainable | Connected | Resilient







## **Jenny Rauch**

Director of Community  
Planning & Development

Sustainable | Connected | Resilient





# ENVISION DUBLIN

## Community Plan

Sustainable, Connected & Resilient



**ADOPTED – JULY 1, 2024**

Sustainable | Connected | Resilient

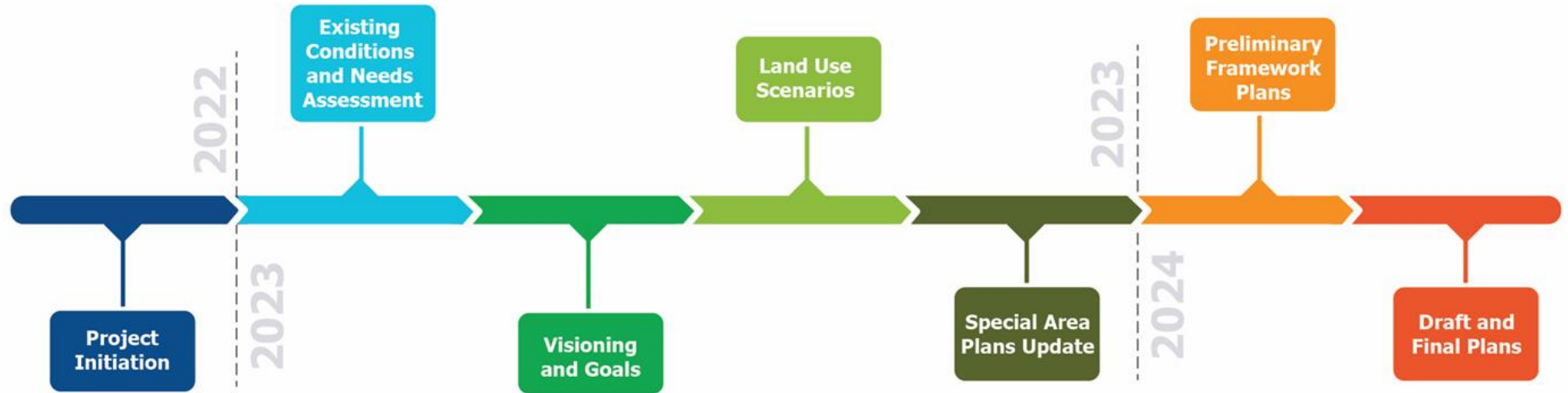




# Importance of Community Planning

- Framework to **guide development decisions**
- Provides a platform for **public involvement** in shaping our community's future
- Road map for the community to **achieve long-term goals**
- Plan now to identify and **protect future opportunities**
- Help the City make **smart investments** of public resources and **ensure fiscal health** and sustainability
- Guide to ensure **consistency** in decision-making
- **Coordinate** local and regional initiatives

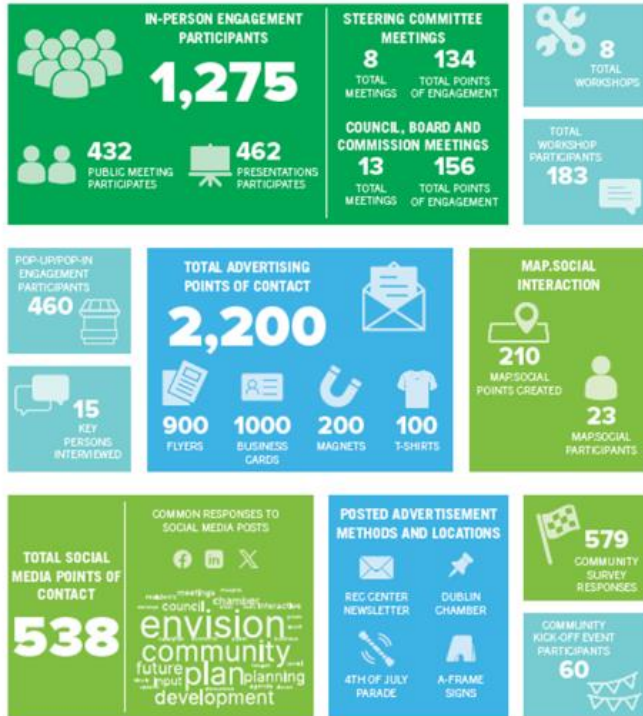
# Envision Dublin Timeline



**CITY COUNCIL – ADOPTED JULY 1, 2024**



# Envision Dublin Public Engagement



TOTAL POINTS OF OVERALL ENGAGEMENT (ALL FORMATS)

5,345

TOTAL MEETINGS AND WORKSHOPS CONDUCTED (ALL FORMATS)

36+



# Highlights of the Community Plan



**Multimodal Thoroughfare Plan**



**Greenways and Blueways**



**Land Use and Development**



**Economic Development**



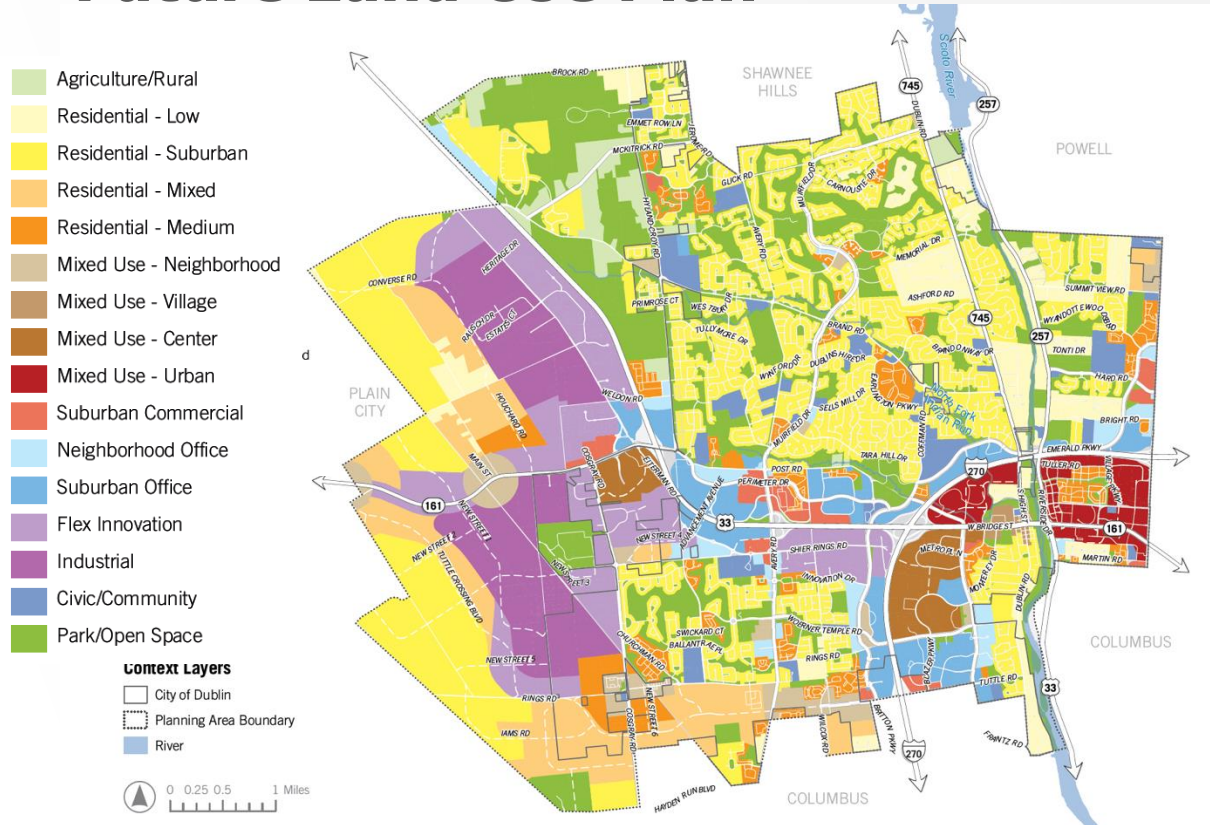
**Housing and Neighborhoods**



**Special Area Plans**



# Future Land Use Plan

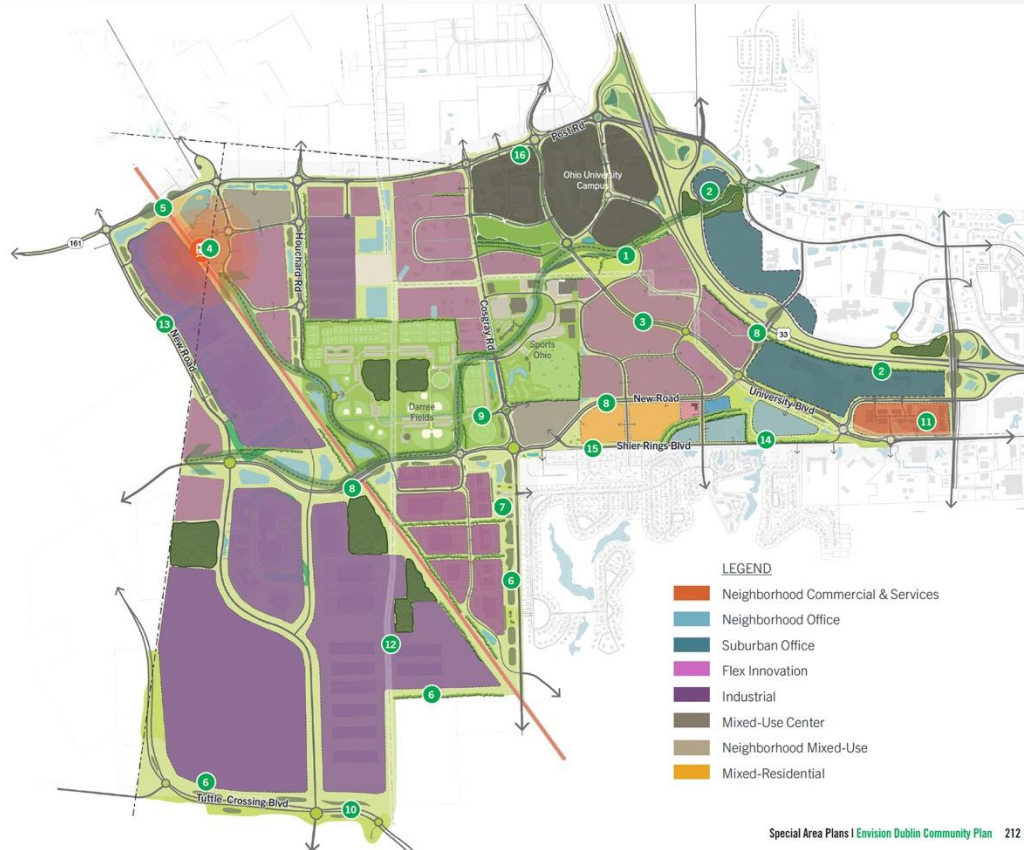


## Land Use Plan Focus

- Support existing neighborhoods
- Mixed-use designation
- Employment generating corridors
- Flex and industrial uses to West
- Residential areas focus in Southwest
- Regional growth and collaboration



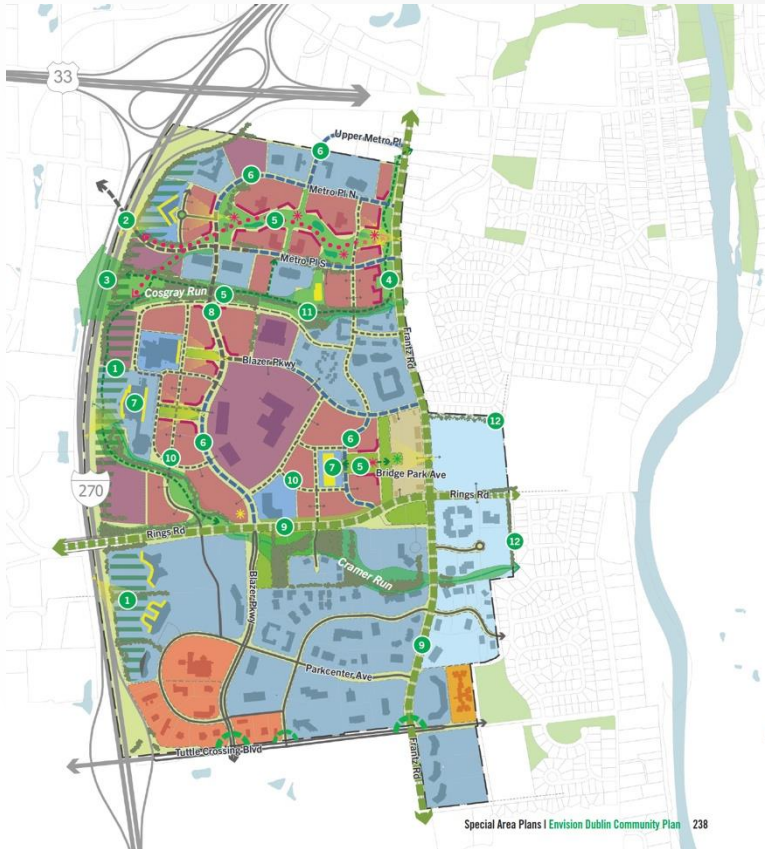
# West Innovation District



## Area Plan Overview

- Modifies area plan boundaries
- Economic Development Strategy alignment
- Future rail site
- Mixed-use center adjacent to Ohio University's Dublin Campus
- Flex, innovative uses to promote additional employment opportunities
- Transition of uses between Ohio University/U.S. 33 corridor down to Shier Rings and Ballantrae

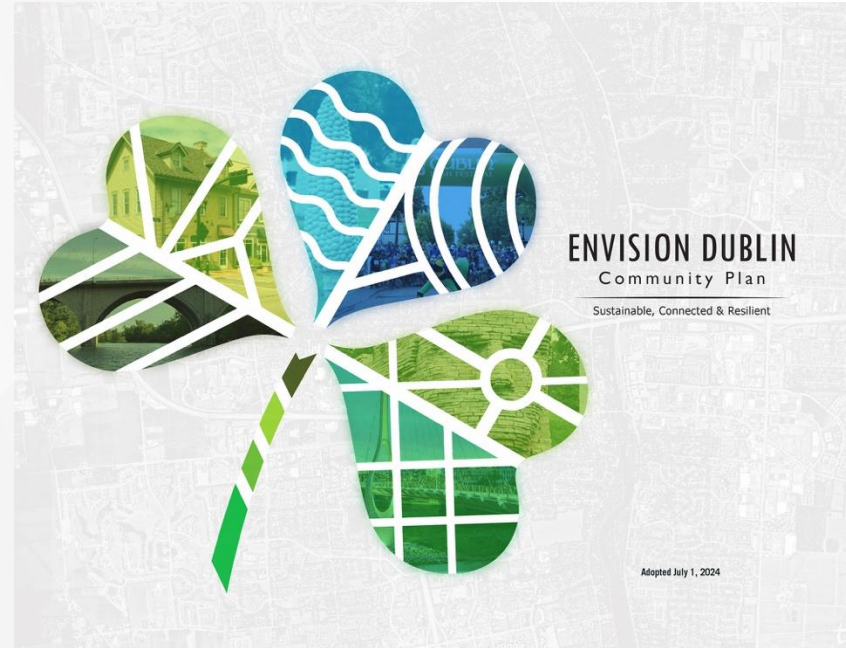
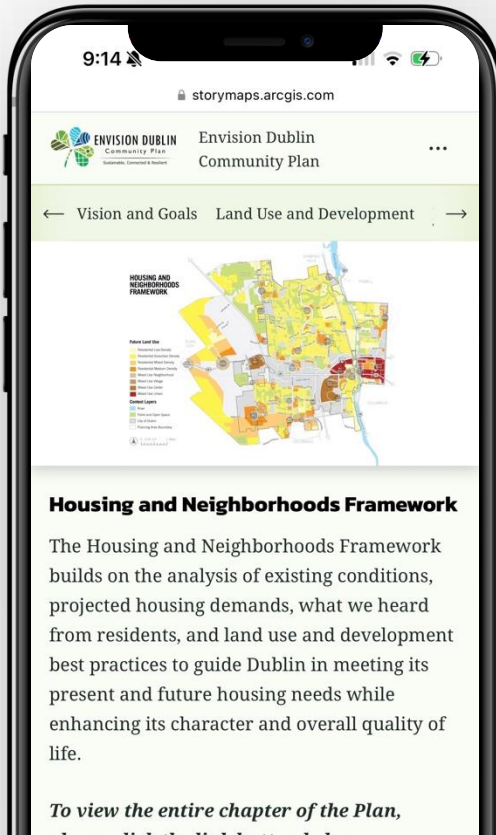
# Dublin Corporate Area



## Area Plan Overview

- Economic development strategy alignment
- Employment focused development along I-270
- Metro Center implementation plan
- Transitions between existing and future development
- Future mobility and transportation connections
- Mix of use with ground-floor activation

# EnvisionDublin.org



Sustainable | Connected | Resilient







**Christopher Will**  
Senior Planner

Sustainable | Connected | Resilient





# City Council Goal



## **Realize the Metro Center Revitalization Vision**

Reposition the Metro Center legacy office park by implementing the vision, goals, and land use recommendations outlined in the Dublin Corporate Area Plan within the Envision Dublin Community Plan. Develop a design and implementation framework that creates a distinctive identity, encourages dynamic reinvestment, provides a vibrant mix of uses in a walkable environment, and promotes sustainable design principles. Identify opportunities for public and private partnerships for catalytic projects that transform the Metro Center area.

# Where we are in the Process





# Metro Center Today



Historic Dublin

Scioto River

OCLC

33

W. Bridge St

Metro Center

Frantz Rd

The Corners

Blazer Pkwy

Cosgray Run

270





# A VISION FOR THE FUTURE



## Metro Center Today

# Elements for Revitalization



Support existing office tenants with complementary uses, amenities, and services



Consolidate underutilized surface parking to create new opportunities for a mix of uses



Embrace walkability and transportation options that link the district to the citywide network



Provide a variety of new housing types for workers and residents



Foster a sense of place and identity unique to Metro Center



Establish a unique natural open space amenity and connect the district with greenspace





**New Identity**



# Economic Vitality

An aerial architectural rendering of a modern urban development. The scene features a central river or canal winding through the area, bordered by lush greenery and pedestrian walkways. Several large, multi-story buildings with contemporary architectural styles, including glass facades and flat roofs, are interspersed with green spaces. A prominent building in the foreground has a large, flat roof with a green lawn and several white HVAC units. Other buildings have rooftop pools and outdoor seating areas. The overall atmosphere is one of a vibrant, walkable community. In the background, a highway and more distant urban areas are visible under a clear sky.



# Market Study Recommendations

- Lead with high-quality eating and drinking, experiential retail and entertainment
- Create a sense of place and unique identity
- Establish a neighborhood with a residential mix, including multi-family rentals and follow with for-sale properties
- Explore creative office typologies





# Development Opportunities to Create Catalytic Change

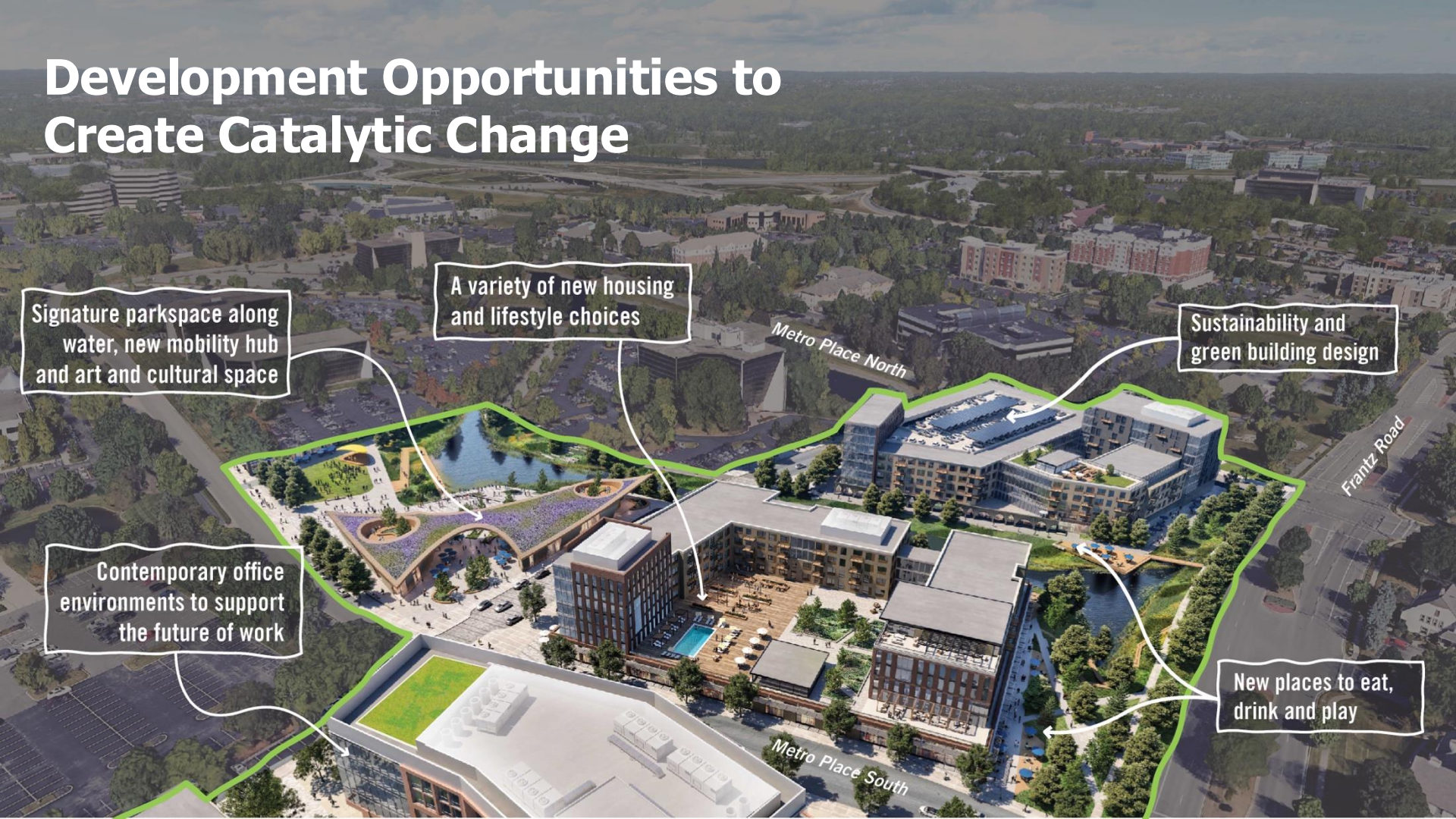
Signature parkspace along water, new mobility hub and art and cultural space

A variety of new housing and lifestyle choices

Sustainability and green building design

Contemporary office environments to support the future of work

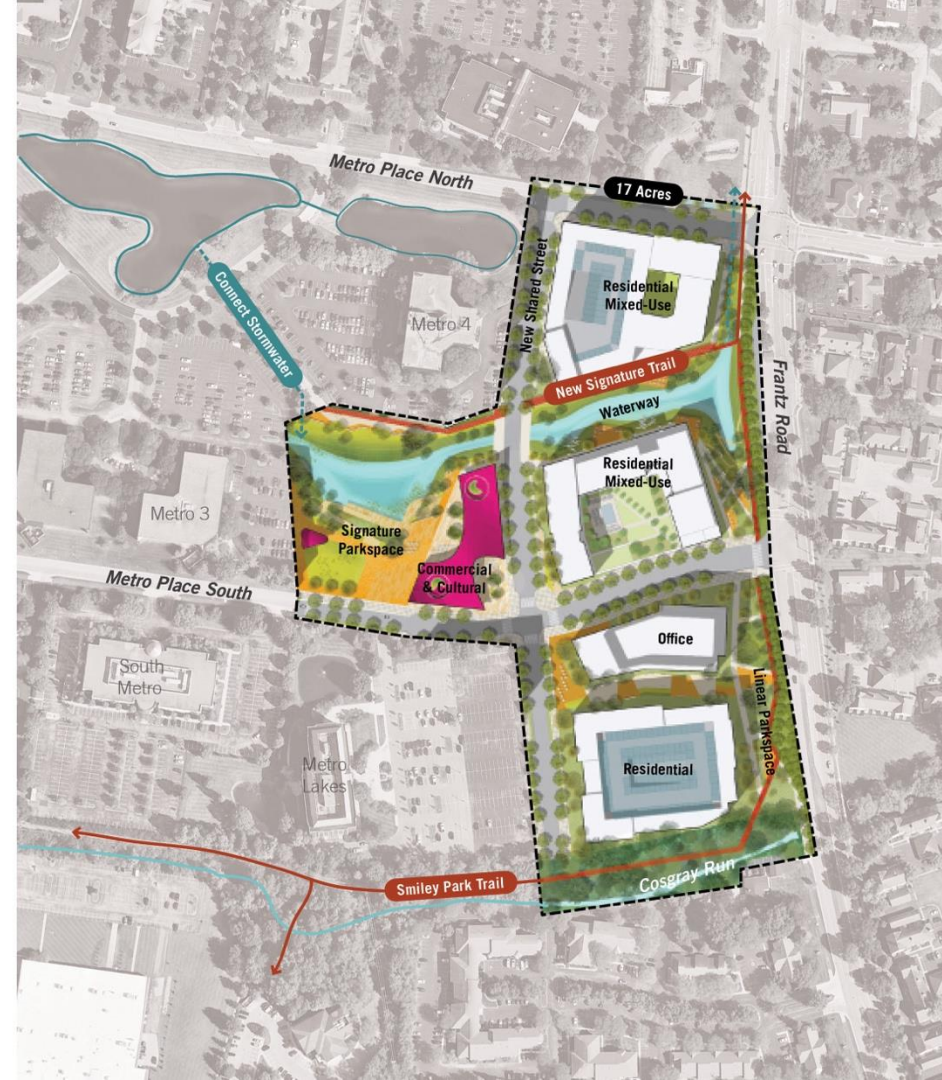
New places to eat, drink and play





# Next Steps to Implement the Plan

- Assemble properties starting along Frantz Road for redevelopment
- Further explore public infrastructure improvements
- Identify and build partnerships
- Create a development proposal
- Continue to communicate with stakeholders and neighbors at each step of the process





## **Jeremiah Gracia**

Director of Economic Development

Sustainable | Connected | Resilient





# Dublin Strategies for Success

## Create

Create distinctive mixed-use development nodes to meet 21st century industrial demand for vibrant physical space while maintaining Dublin's high quality of place standards

## Make

Make Dublin's development processes more transparent and predictable, thereby reducing uncertainty

## Nurture

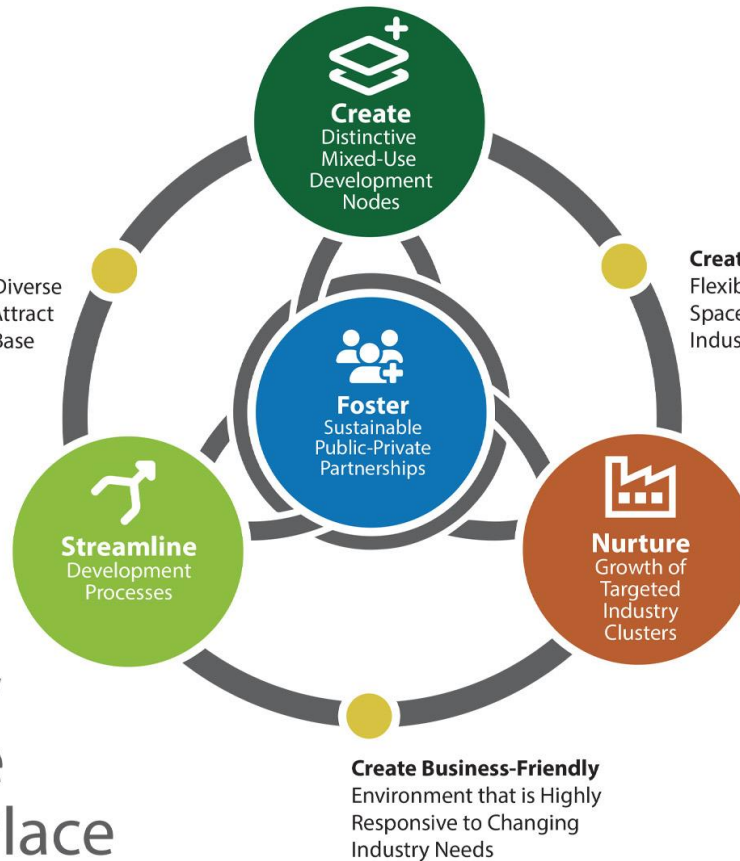
Nurture growth of targeted industry clusters through proactive attraction and BR&E activities

## Foster

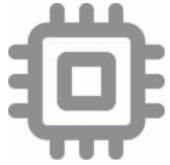
Foster sustainable partnerships to catalyze value-added collaborations

# Maintain High Quality Infrastructure & Quality of Place

**Create Vibrant**  
Environment and Diverse  
Housing Stock to Attract  
and Retain Talent Base



# Our Existing Industries



Information  
Technology



Corporate HQs  
& Managing Offices



Automotive  
& Logistics



Medical Biosciences  
& Healthcare



Business  
Services

Sustainable | Connected | Resilient





# Sarnova Energy New HQ Expansion



## 5000 Bradenton Ave.

- 50,000 square feet
- 200 jobs retained and/or created
- Target completion 2025



**"Dublin has done an incredible job of balancing residential space, business space and public space in a way that draws us all together. I've lived in so many places over the years, and nothing compares to this part of the world."**

*Jim Gannon, senior vice president, Human Resources*

# Cenovus Energy New HQ & Expansion



## 4455 Bridge Park Ave.

- 50,000 square feet
- 225 jobs retained and/or created
- Target completion 2027



**"We're pleased to be moving to the Bridge Park area. Bridge Park is in a vibrant area of Dublin with access to great amenities for our staff. Moving our offices is exciting for us while also creating an improved office experience for our employees."**

*Eric Zimpfer, senior vice president*



# Fallback Studios New HQ



## 7007 Discovery Blvd.

- 250,000 square feet
- 49 jobs retained and/or created
- Hollywood-caliber film production and sound stages with state-of-the-art LED volume wall

**"We are incredibly excited to bring Fallback Studios to Dublin. Our facilities will be unlike anything else in the area and aligns well with Dublin's internationally known brand"**

*Kevin Kale, CEO*

# Your Call to Action

- 1. Engage** and make Dublin the most Sustainable, Connected & Resilient Global City of Choice
- 2. Create** proposals for West Innovation District and Metro Center Implementation Plan development opportunities
- 3. Collaborate** on the implementation of our Economic Development Strategic Plan

## Engage With Us



Engage with the  
City of Dublin on  
your favorite  
social channel.



### **ThriveInDublinOhio.com**

Easy to follow links will direct you to all the resources you will need.



### **Dublin News Now**

Subscribe to get the latest Dublin news sent direct to your inbox.



### **Social Media**

Be sure to connect with the City of Dublin on social media platforms for timely and relevant information.



An aerial photograph of a city, likely Atlanta, with a semi-transparent green overlay. The image shows a dense urban landscape with various building footprints, roads, and green spaces. Several districts are labeled with white text and thin white lines pointing to specific areas. The labels include 'Perimeter Commerce District' in the upper left, 'Shier Rings TechFlex District' in the middle left, 'Metro Office District' in the center, 'Emerald Corporate District' in the upper right, 'Bridge Street District' in the far right, and 'Blazer Research District' in the lower right. The text 'Thank you' is prominently displayed in the center in a large, white, sans-serif font.

Perimeter Commerce District

Shier Rings TechFlex District

Emerald Corporate District

Bridge Street District

Metro Office District

Thank you

Blazer Research District